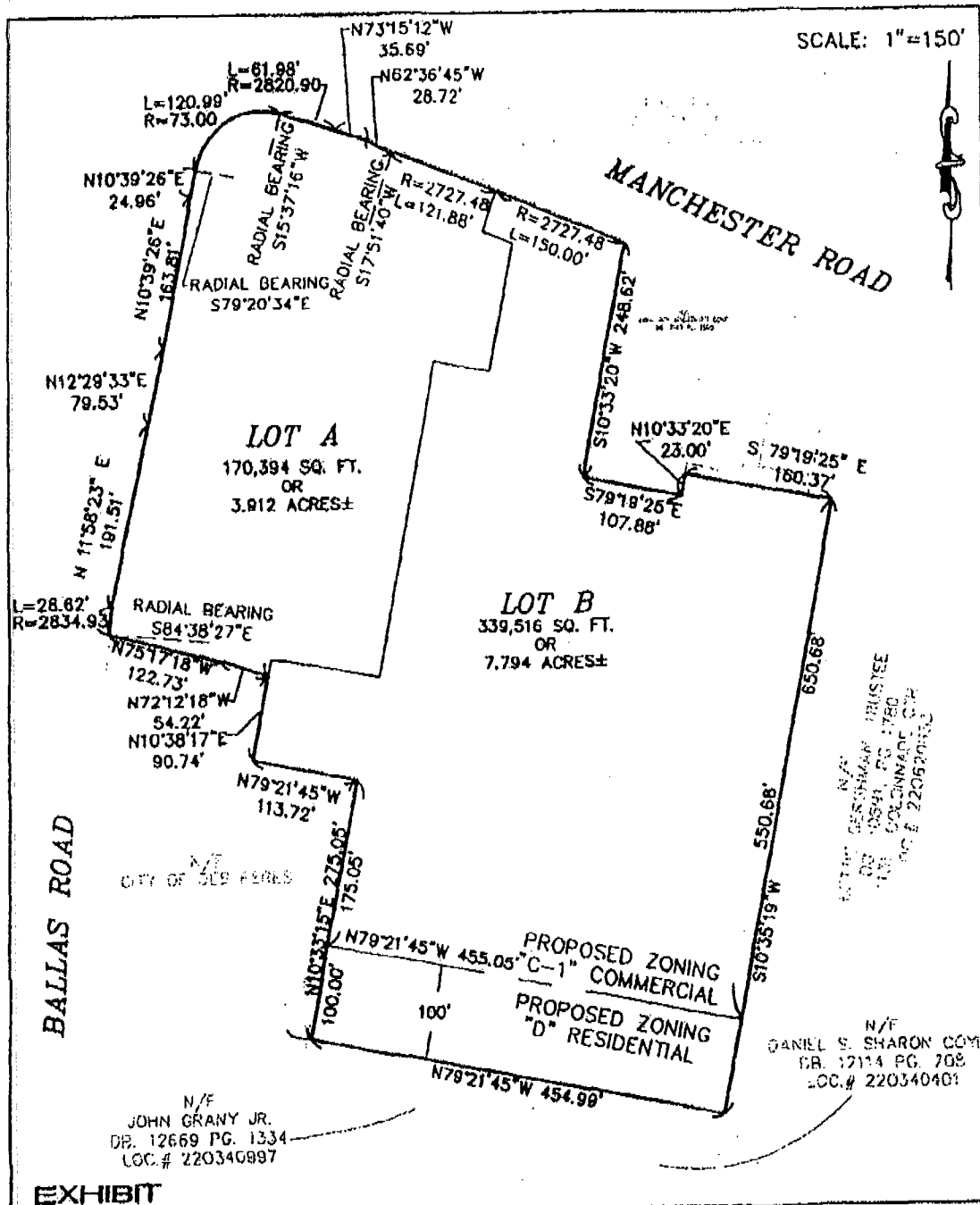


EXHIBIT B
Boundaries of District



EXHIBIT

ZONING EXHIBIT

A TRACT OF LAND BEING PROPOSED LOTS A AND B OF PROPOSED DES PERES CORNERS BEING PART OF THE WEST 1/2 OF THE NORTHEAST 1/4 OF SECTION 34, TOWNSHIP 45 NORTH, RANGE 5 EAST OF THE 5TH PRINCIPAL MERIDAN, CITY OF DES PERES, ST. LOUIS COUNTY, MISSOURI

DATE 2/6/08

3602\survey\zoning-exhibit.dwg